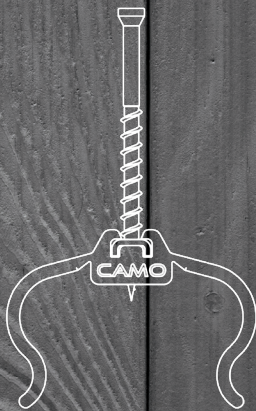


# CAMO® EDGECLIP™

DECK RESPONSIBLY™

INSTALL  
DECKING  
UP TO  
**5X**  
FASTER

## EDGECLIP™

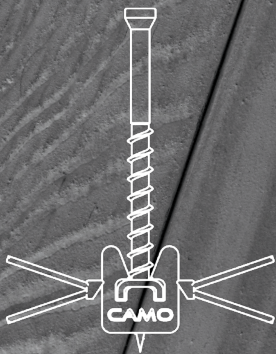


FOR 90° DECKING PATTERN

## INSTALLING ANY GROOVED DECK BOARDS HAS NEVER BEEN THIS EASY

- REDUCE INSTALLATION TIME BY UP TO 5X
- TWO INSTALLATION CHOICES - THE NEVER-MISS™ GUIDE INCLUDED IN EVERY PAIL OR THE CAMO® DRIVE™ TOOL (SOLD SEPARATELY)
- EASY TO USE AND UNDERSTAND
- CAN BE USED ON ANY GROOVED DECKING MATERIAL - WOOD, CAPPED COMPOSITE OR PVC
- REDUCE YOUR INSTALLED COST BY COMPLETING JOBS QUICKER
- UP TO 88% STRONGER THAN THE LEADING DECK BOARD MANUFACTURER'S CLIPS
- WARRANTED FOR USE WITH GROOVED WOOD, CAPPED COMPOSITE, AND PVC DECKING

## EDGE<sup>X</sup>CLIP™



FOR ANGLED DECKING PATTERN



AVAILABLE IN 90, 450 & 900 CT.

INSTALLING ANY GROOVED DECK BOARDS HAS NEVER BEEN THIS EASY

# HOW IT WORKS

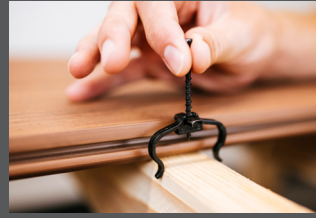
## EDGECLIP™



FOR TRADITIONAL 90° DECKING PATTERN



SIMPLY ATTACH CLIP LEGS AROUND JOIST



SLIDE CLIP INTO GROOVE

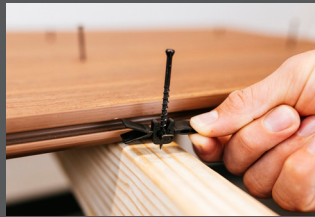


CLIP IS NOW FIRMLY IN PLACE  
NO PRE-INSTALL IS REQUIRED

## EDGE X CLIP™



FOR ANY ANGLED DECKING PATTERN



SIMPLY SQUEEZE THE WINGS



INSERT INTO GROOVE

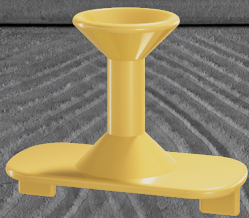


CLIP IS NOW FIRMLY IN PLACE  
NO PRE-INSTALL IS REQUIRED

# FAST INSTALLATION

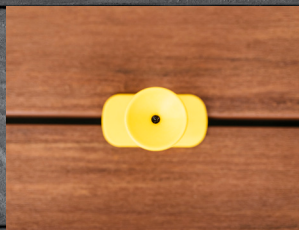
## NEVER-MISS™ GUIDE

REALLY FAST



INCLUDED IN EVERY PAIL

INSTALL DECKING IN HALF THE TIME



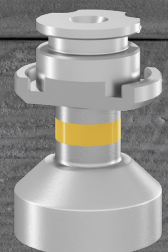
PLACE NEVER-MISS™ GUIDE OVER SCREW



DRIVE SCREW INTO JOIST

## CAMO® DRIVE™

CRAZY FAST



CLIP GUIDE

INSTALL DECKING UP TO 5X FASTER