

ASSEMBLY OF RAILING GATE 36", 48" AND 60"

For a 36" or 48" width gate, we have included a pre-measured template for your convenience.

To Use: Align the template with the outer edge of the rail and cut on the indicated line. Repeat this step on both ends of the rail. General rule of thumb, measure twice, cut once.

Please note the gate kit is pre cut for a 60" width gate and no additional cutting is necessary.

General gate assembly instructions below.

- 1** Start gate assembly by locating all parts to the gate: Socket posts, rails & pickets. Using **NO GLUE**, assemble for a "dry" test.



2

Once the gate is assembled, measure the width at the top and bottom of gate as shown here. They must be the same width or your gate will be out of square!



Note: You must have the pickets in place prior to gluing the gate.

- 3** Measure diagonally as well. Both ways should be the same or within 1/8" difference at most! Make any adjustments for gate before moving forward.



****THE PICKETS SHOULD BE INSERTED AT THIS POINT IN THE INSTALLATION****

4

After the gate has been checked carefully remove the rails from the gate posts. Flip first gate post up and insert a 1/4" bead of glue around the inside of the pocket down about 1/4" from top of the pockets.



- 5** After the glue is in the pocket of the first socket post, flip it down and quickly insert the rails into the pocket. Move on to the next step quickly! Be sure to firmly insert the rails, the adhesive will set in about 45 seconds.



*Please note the pickets should already be installed at this time.

6

Quickly repeat the previous step for the other post. This may take some assistance to do before the adhesive sets. Quickly, measure the top and bottom of gate as shown here. Both measurements should be the same.



*Please note the pickets should already be installed at this time.

- 7** After the gate has set for 24 hours, lay the angle brace on the gate and mark the length to cut. The brace is to be mounted to the rails only, (see pictures) Pre-drill 2 holes into the angle brace only. **DO NOT** pre-drill into the gate. The angle brace should run at an angle starting at the bottom of the bottom rail near the bottom hinge and run at an angle towards the top of the top rail of the latch post.



- 8** Attach the brace using 2 self-taping screws at each end of the gate as shown to the right. The screws are provided. Note: Marke the hinge side of sock post with tape. This will keep you from installing the angle brace in the wrong direction.



GATE INSTALLATION INSTRUCTIONS

The following is based on an assembled gate that is properly sized for opening.

SINGLE GATE INSTRUCTIONS

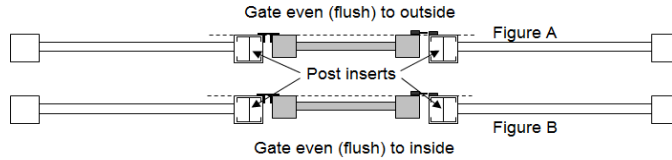
- A. Determine the direction the gate is to swing, usually swings into yard. **Be sure to check your local codes!**
- B. Locate and follow hardware installation instructions.

FOR GATE TO SWING AWAY FROM YARD

Mount the hardware on the outside of the gate and fence posts as shown below. The gate will be flush with the outside of

FOR GATE TO SWING TO THE INSIDE OF YARD

Mount the hardware on the outside of the gate and fence posts as shown below. The gate will be flush with the outside of the posts as shown in Figure A.



NOTES: Be sure the gate will be up high enough to clear any obstructions such as snow. The gate posts should be cut on site as needed. Some installers cut the gate posts off at the bottom of the bottom gate pocket. **DO NOT** cut into the gate pockets.

DOUBLE GATE INSTRUCTIONS

Typical gate installation based on an assembled gate that has been properly sized for the opening

- A. Follow the same instructions as per a single gate when installing the hinges for both gates.
- B. To calculate the variances for the latch you must treat the fixed gate as if it were a standard railing panel.
- C. The ideal hardware installation on a double gate should have equal spacing between posts and gates.
- D. Install the Drop Rod to post of the fixed gate.

