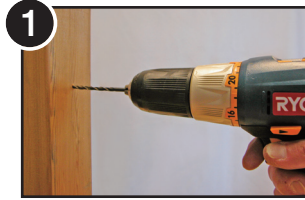


Installation Steps for Quick-Connect® Swivel Turnbuckles

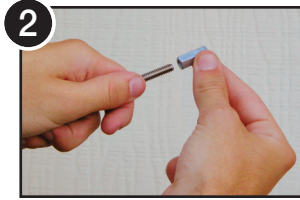
10/16/2012

Note: We recommend attaching the non-adjustable fixed-style end fittings before attaching the tension-adjustment-style fittings shown below.

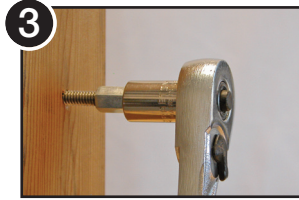
Installing the Quick-Connect® Lag Swivel Turnbuckle



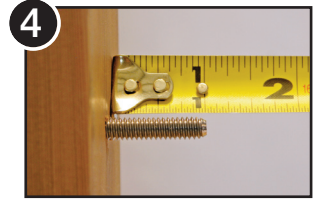
1 Drill 7/64" pilot hole. Harder woods may need larger hole.



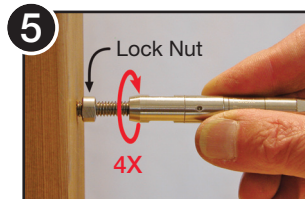
2 Spin Hanger Bolt Installation Tool (sold separately) onto the end of the bolt (or use 2 locking hex nuts—not included).



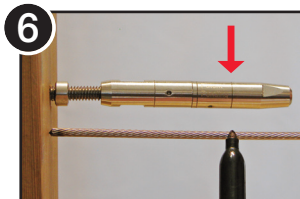
3 Drive Hanger Bolt into post using 7/16" socket or electric drill with 1/2" chuck.



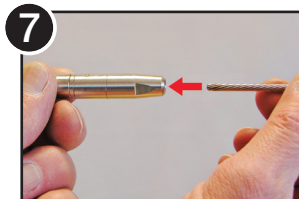
4 Drive until threaded section protrudes approximately 1".



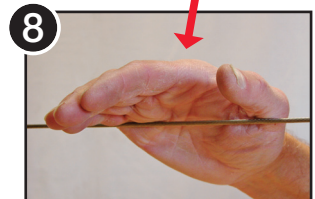
5 Spin the turnbuckle lock-nut onto the exposed threads. Then attach Quick-Connect® and rotate the body 4 full turns.



6 Stretch cable tight across fitting and mark at Cut Gauge Line. Cut cable at mark.



7 Loosen Quick-Connect® 2 full turns and insert cut cable end as far as it will go into the fitting; the jaws will automatically lock on.



8 Hand tighten the Quick-Connect® as far as possible, then swiftly hit the cable line with your palm several times to ensure that jaws are securely seated.



9 Use 3/8" wrenches to tighten the Quick-Connect® to desired final tension.

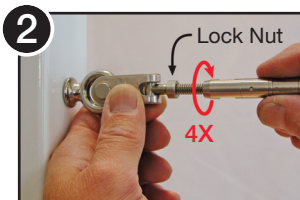


10 Tighten the lock-nut against the Quick-Connect® to prevent the fitting from loosening.

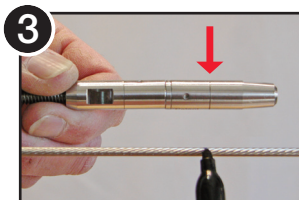
Installing Quick-Connect® Jaw Swivel Turnbuckle



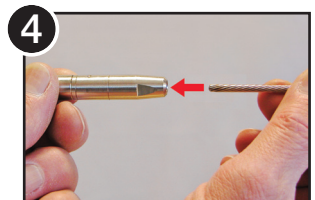
1 Install Jaw onto an eyebolt or eyelet using the removable clevis pin.



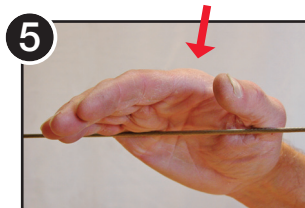
2 Spin the turnbuckle lock-nut onto the threads. Then attach the Quick-Connect® and rotate the body 4 full turns.



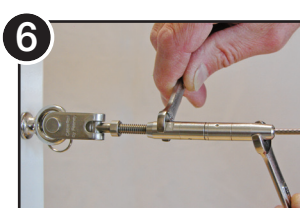
3 Stretch cable tight across fitting and mark at Cut Gauge Line. Cut cable at mark.



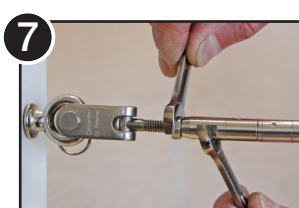
4 Loosen Quick-Connect® 2 full turns and insert cut cable end as far as it will go into the fitting; the jaws will automatically lock on.



5 Hand tighten the Quick-Connect® as far as possible, then swiftly hit the cable line with your palm several times to ensure that jaws are securely seated.

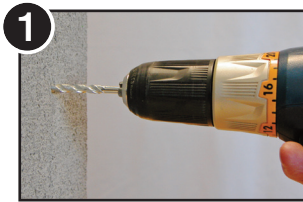


6 Use 3/8" wrenches to tighten the Quick-Connect® to desired final tension.

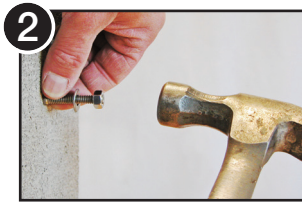


7 Tighten the lock-nut against the Quick-Connect® to prevent the fitting from loosening.

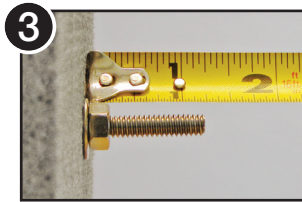
Installing the Quick-Connect® Expansion Anchor Swivel Turnbuckle



1 Drill 1/4" hole with masonry bit to 1-1/4" (minimum) depth. Blow debris out of hole.



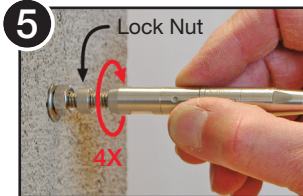
2 Carefully tap the Expansion Anchor (with washer & anchor nut).



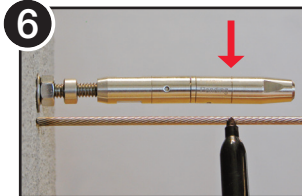
3 Tap until approximately 1-1/4" of the threaded shaft protrudes from the wall.



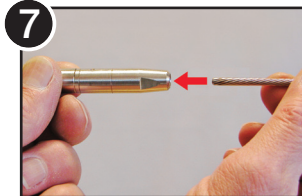
4 Use 7/16" wrench to tighten anchor nut until anchor is properly seated and locked.



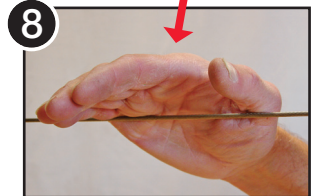
5 Spin the turnbuckle lock-nut onto the exposed threads. Then attach Quick-Connect® and rotate the body 4 full turns.



6 Stretch cable tight across fitting and mark at Cut Gauge Line. Cut cable at mark.



7 Loosen Quick-Connect® 2 full turns and insert cut cable end as far as it will go into the fitting; the jaws will automatically lock on.



8 Hand tighten the Quick-Connect® as far as possible, then swiftly hit the cable line with your palm several times to ensure that jaws are securely seated.



9 Use 3/8" wrenches to tighten the Quick-Connect® to desired final tension.



10 Tighten the lock-nut against the Quick-Connect® to prevent the fitting from loosening.

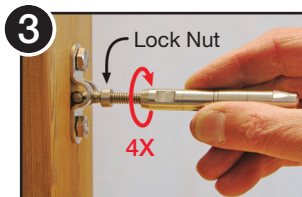
Installing the Quick-Connect® Surface Mount Swivel Turnbuckle



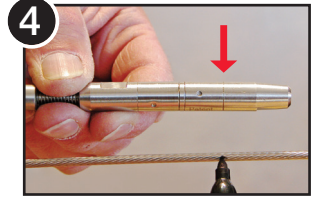
1 Measure, mark, and drill pilot holes.



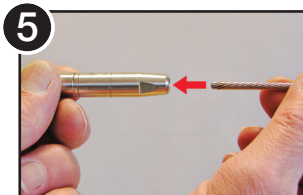
2 Bolt/screw Surface Mount fitting to wall/post (bolts or screws sold separately)



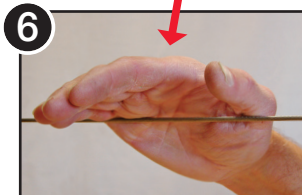
3 Spin the turnbuckle lock-nut onto the exposed threads. Then attach Quick-Connect® and rotate the body 4 full turns.



4 Stretch cable tight across fitting and mark at Cut Gauge Line. Cut cable at mark.



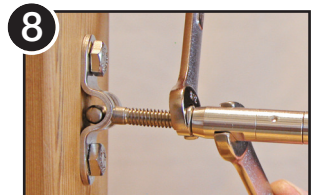
5 Loosen Quick-Connect® 2 full turns and insert cut cable end as far as it will go into the fitting; the jaws will automatically lock on.



6 Hand tighten the Quick-Connect® as far as possible, then swiftly hit the cable line with your palm several times to ensure that jaws are securely seated.



7 Use 3/8" wrenches to tighten the Quick-Connect® to desired final tension.



8 Tighten the lock-nut against the Quick-Connect® to prevent the fitting from loosening.