

ENCOUNTER THE DISTINCTION OF...
Aurora Deck Lighting!



Aurora ✨
DECK LIGHTING

LET THERE BE *Light*

When it comes to designing attractive, high quality, and energy efficient outdoor lighting for decks, fences, docks, and other outdoor environments, Aurora Deck Lighting is an industry leader!

BRIGHT IDEAS COURTESY OF *Aurora*

Deck builders, fence builders, remodelers, and homeowners look to Aurora for innovative lighting options that coordinate seamlessly with wood or composite materials. Our lights are available in a variety of designs: from classic lantern styles to high profile designs, and sleek, modern LED lights. We also offer the convenience of all-inclusive kits that make it easy to install energy efficient recessed lighting in decks or steps, as well as versatile strips of bright LEDs under deck rails, patio covers, or stairs.

With every light we offer, one factor remains the same: our lights look great, not only when the sun goes down, but all day long!

THE FINISHING *Touch*

All Aurora Deck Lighting is made of rust-free aluminum, which is powder coated for a long-lasting finish. Aurora Deck Lighting is easy to install, and is available in low voltage, line voltage, and solar options. Our lights are available in 14 designer colors, and they come in ten different sizes to fit posts from 2" to 6-1/2". Adapters are also available for mounting our post cap lights directly to deck or porch rails. With Aurora, there's a light for every application!

POPULAR CELESTIAL LIGHTING FROM *Aurora*

- NOVA Low profile caps shine beams of down light to accent posts
- ECLIPSE High profile caps with LED spots for a flash of brilliance
- POLARIS Solar lighting with detailed lantern styling
- TITAN Glass options add style to layered rectangle design
- ORION Geometric framework adds interest to this lantern light
- SIRIUS Our pyramid styling comes with a range of glass options
- ZENITH The crystal ball top adds dimension and style to this lantern light

CONTENTS

	THE PHOENIX	4
	THE ODYSSEY	5
	THE COSMIC VEGA, NEBULA, ARIEL, PYXIS, CORONA, QUASAR	6-7
	THE POLARIS	8
	THE PEGASUS	9
	THE IRIS ANELLO	10
	THE SATURN ANELLO	11
	THE ECLIPSE	12
	THE NOVA	13
	THE ORION	14
	THE TITAN	15
	THE SIRIUS	16
	THE ZENITH	17
	POST CAP ACCESSORIES	18
	SOLAR POWER SYSTEM	19
	LIGHTING ACCESSORIES	20
	THE LUNAR LANDSCAPE LIGHTS GEMINI, APOLLO, MERCURY	21
	PHOTO GALLERY	22-27

THE PHOENIX

LIGHT IT UP WITH *Phoenix*...

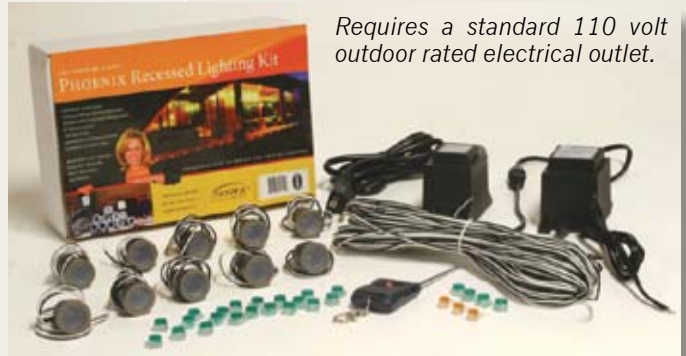
Our Phoenix LEDs are just 1-1/8" wide. Their tiny size provides versatility for installing them flush with deck surfaces for a seamless install that illuminates borders or stairs for function and style.

Additional lights may be purchased either in pairs or bundles of ten, and up to 40 lights can be run off of one LED driver box.

THE *Phoenix Kit*...

Our kits include ten cool white LED bulbs, LED driver box, connective wire, remote control driver box with a handy remote control.

Requires a standard 110 volt outdoor rated electrical outlet.



THE BIT For a Perfect Fit...

A specially designed drill bit is available to make drilling the perfect hole an easy one-step process.



Long Lasting LEDs...

Our LED bulbs are rated to burn bright for years without replacement.



Two packs also available in warm white and blue color.

Phoenix RECESSED LEDs... Help to define deck borders and increase safety for family and friends enjoying your deck after dark.



THE ODYSSEY

Aurora Deck Lighting's Design Team...

Has broken new ground in LED lighting with the introduction of the Odyssey LED Strip Lighting Kit. Each kit comes complete with four strips of LED lights (choose from four lengths up to 48" long), installation wire, connectors, the LED driver box with timer, remote driver, and remote control.



DECK LIGHT Drama...

Use Odyssey lights to create a dramatic curtain of light that shines down from under deck rails, stair rails, steps, soffits, patio covers, gazebos, or the underside of a deck. These long lasting tiny LED light bulbs, in their chain, puts out a beam of light with a 120 degree radius.



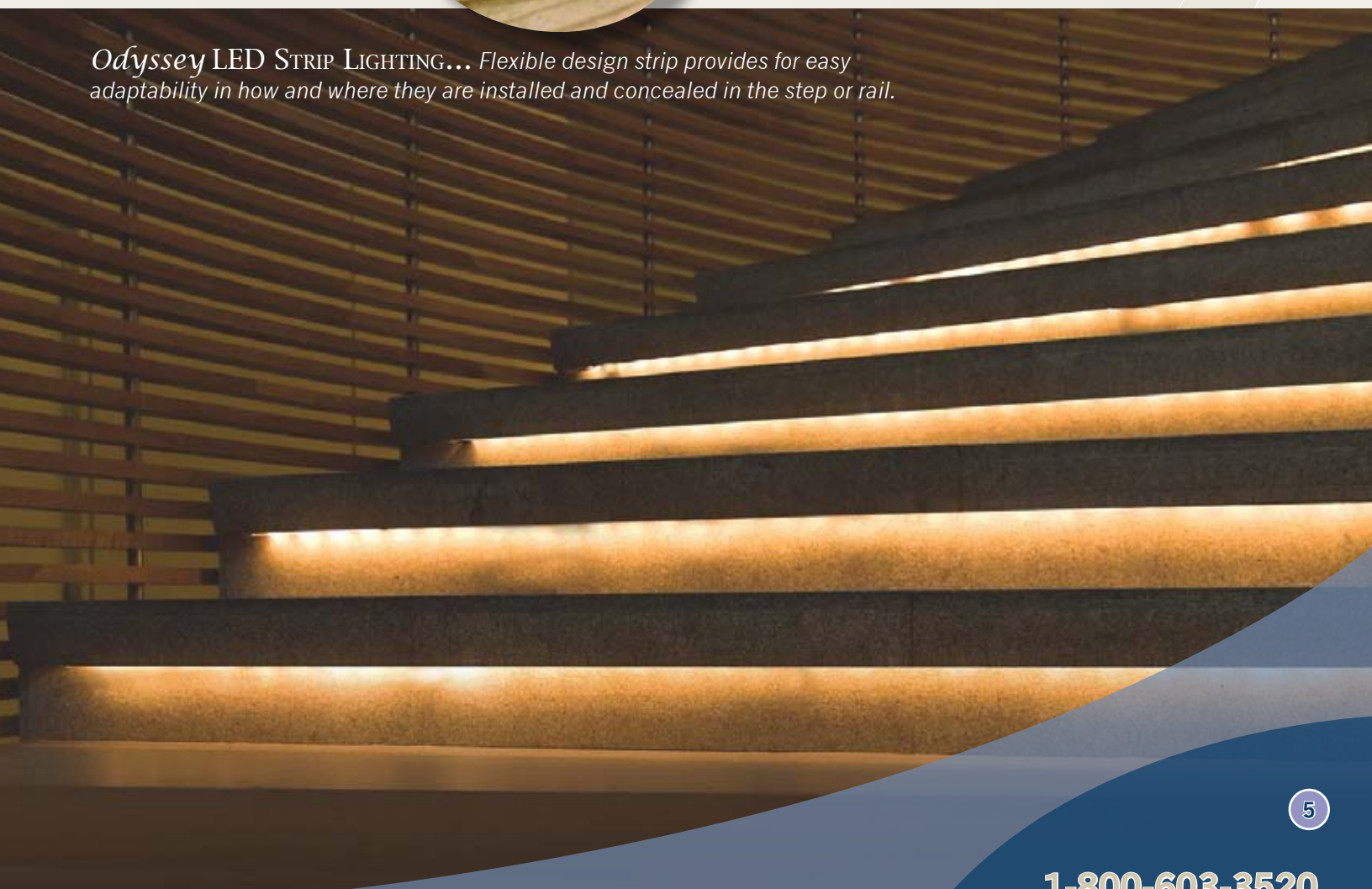
EXPAND THE LOOK – Choose Your Length...

Each kit comes with four strips. Choose from...

- 18 inch • 24 inch • 36 inch • 48 inch

Expansion strips are available! Up to 20 feet of strip lights can be powered by a single LED Driver Box.

Odyssey LED STRIP LIGHTING... Flexible design strip provides for easy adaptability in how and where they are installed and concealed in the step or rail.



Our Cosmic Star Lights...

Are small post lamps designed for deck, fence posts or any surface where a spot of light is desired to aid safe footing or provide accent lighting.

THE VEGA



OUR *Newest Star...*
A solid cast aluminum funnel light featuring a bright LED bulb.

LOW VOLTAGE LIGHTS*

Black	White	Natural Brown	Bronze	Tan	Clay	Copper
S	S		S			

THE NEBULA



A *Sphere...*
Eyeball design directs warm white LED light down the post to the deck.

LOW VOLTAGE LIGHTS*

Black	White	Natural Brown	Bronze	Tan	Clay	Copper
S	S	S	S			S

THE QUASAR



OUR *Brightest Star...*
These 12V lights produce an expansive glow across your walkway.

LOW VOLTAGE LIGHTS*

Black	White	Natural Brown	Bronze	Tan	Clay	Copper
S	S		S	S	S	

THE ARIEL



HORIZONTAL *Beams...*
Of light create warm patterns of accent light.

LOW VOLTAGE LIGHTS*

Black	White	Natural Brown	Bronze	Tan	Clay	Copper
S	S	S	S			S

THE CORONA



ENERGY *Efficiency...*
Brighten your pathways throughout the night, while using energy wisely.

LOW VOLTAGE LIGHTS*

Black	White	Natural Brown	Bronze	Tan	Clay	Copper
S	S		S			

THE PYXIS



PERFECT *Pyxis...*
Louvered design for stair safety and recessed rays of light.

LOW VOLTAGE LIGHTS*

Black	White	Natural Brown	Bronze	Tan	Clay	Copper
S	S	S	S			S

THE
COSMIC



THE VEGA



THE NEBULA



THE QUASAR



THE ARIEL



THE CORONA



THE PYXIS



THE POLARIS



THE Polaris Style of Light...
Radiates the night through solar power!

These solar powered lights fit a wide range of post sizes and fit wood, vinyl, composite, and metal posts. See chart for size and color.



THE Polaris Light...

Is designed specifically to receive the powerful solar cell!

All Polaris Series lights come with 700 ma high capacity batteries that capture the sun's powerful energy. Polaris lights are designed to illuminate for up to 14 hours.

SIZE IN INCHES	Black	White	Natural Brown	Bronze	Tan	Clay	Copper	Titanium
2"	S	S		S			S	
2-1/2"	S	S		S			S	
3"	*	*		*	*			
3-1/2"	S	S	S	S	*		S	*
4"	S	S	*	*	S	S	*	S
4-3/8"	S	*	*	*	*	*	*	*
4-5/8"	S	S	*	S				
5"	S	S	*	*	S	*	*	*
5-1/2"	S	S		S				
6"	*	*						
6-1/2"		*						

Legend: S = Standard Stock Light * = Requires Conversion Base



THE PEGASUS

POWERED BY THE SUN... Our Pegasus Light's

Solar cell absorbs the sun's rays to turn lights on automatically at dusk for hours of a soft night light glow!



THE SOLAR POWERED Pegasus...

Shines four spots of bright LED light from fence or deck posts onto surfaces below from a sleek, low profile cap of top quality aluminum.

The Pegasus is available in three popular, weather resistant color finishes.

EASY MOUNT STYLE...

Our solar cap requires no wiring and easily installs to composite or wood posts in sizes from 3-1/2" to 5-1/2". Homeowners and neighbors appreciate the functional down lighting.



SIZE IN INCHES	Black	White	Natural Brown	Bronze	Tan	Clay	Copper	Titanium
3-1/2"	S			S				
4"		S						
4-3/8"	S							
4-5/8"	S	S						
5"		S						
5-1/2"	S	S		S				

Legend: S = Standard Stock Light * = Requires Conversion Base

Homeowners and neighbors appreciate the functional down lighting that eliminates glare and utilizes the power of the sun.



THE IRIS



IRIS ANELLO
*Accents the Night
 Using Only One Watt of Electricity!*

LOW VOLTAGE LIGHTS:

Offer widest range of lighting styles and colors.



CREATE A SOFT... *Ring of Light*

To accent your deck railing. These LED post cap lights use the latest technology to illuminate the acrylic lens and positively impact the outdoor living experience.

The pyramid-topped Iris Anello is a beautiful deck light that is both dramatic and environmentally friendly.

SIZE IN INCHES	Black	White	Natural Brown	Bronze	Tan	Clay	Copper
3-1/2"	S	S	❖	S	❖		❖
4"	S	S	❖	S	❖	❖	❖
4-3/8"	S	S	❖	S	❖	❖	❖
4-5/8"	S	S	❖	S			
5"	S	S	❖	S	❖	❖	
5-1/2"							

Legend:

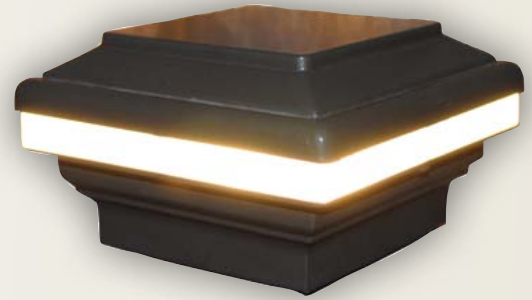
S = Standard Stock Light

* = Special Order Light



THE SATURN

SATURN ANELLO
Accents the Night
Using Only One Watt of Electricity!



LOW VOLTAGE LIGHTS:
 Offer widest range of lighting styles and colors.

SIZE IN INCHES	Black	White	Natural Brown	Bronze	Tan	Clay	Copper
3-1/2"	S	S	◆	S	◆		◆
4"	S	S	◆	S	◆	◆	◆
4-3/8"	S	S	◆	S	◆	◆	◆
4-5/8"	S	S	◆	S			
5"	S	S	◆	S	◆	◆	
5-1/2"							

Legend:

S = Standard Stock Light
 * = Special Order Light

ENVIRONMENTALLY FRIENDLY DECK LIGHT...
Uses Less Energy

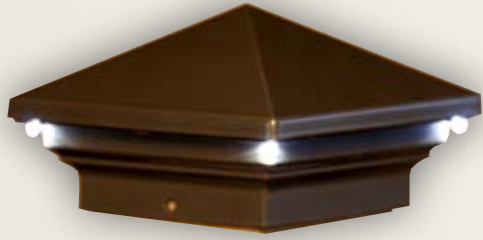
These lights use LED technology which uses one-twelfth the amount of electricity to brighten a deck or fence post. The opaque lens shines lights outward like a ring to create a unique lighting experience that is simple and easy to install.

MIX AND MATCH...

The Saturn Anello light has a square top which can be mixed with the Titan light for a dramatic presentation.



THE ECLIPSE



FLASH OF BRILLIANCE... *The Eclipse Light's*

Are an attractive high profile deck light that shines four tiny spots of LED light onto posts and surfaces below to add a soft glow to outdoor environments.

A WIDE SELECTION...

Of colors and sizes makes the Eclipse a popular choice for adding a pop of color and light to decks, fences or docks.

LOW VOLTAGE LIGHTS:

Offer widest range of lighting styles and colors.



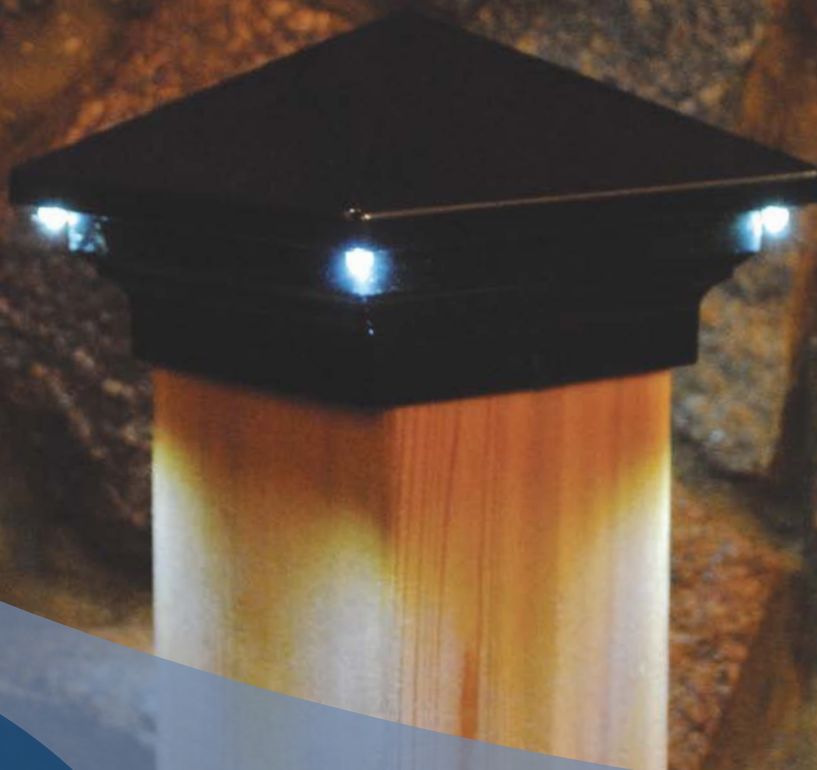
SIZE IN INCHES	Black	White	Natural Brown	Bronze	Tan	Clay	Copper
3-1/2"	S	S	◆	S	◆	◆	◆
4"	S	S	◆	◆	S	S	◆
4-3/8"	S	S	◆	S	◆	◆	
4-5/8"							
5"	S	S	◆	◆	◆	◆	
5-1/2"	S	S	◆	◆			◆
6"	◆	◆					

Legend:

S = Standard Stock Light

* = Special Order Light

The Eclipse Deck Light... an excellent choice for energy efficient LED lighting!



THE NOVA



LOW VOLTAGE LIGHTS:
Offer widest range of lighting styles and colors.

SIZE IN INCHES	Black	White	Natural Brown	Bronze	Tan	Clay	Copper
3-1/2"	S	S	❖	S	❖	❖	❖
4"	S	S	❖	❖	S	S	❖
4-3/8"	S	S	❖	S	❖	❖	
4-5/8"							
5"	S	S	❖	❖	❖	❖	
5-1/2"	S	S	❖	❖			❖
6"	❖	❖					

Legend:

S = Standard Stock Light
* = Special Order Light

MULTI-LAYERED DISTINCTION...
Our Nova Light's

Showcase an attractive flat top post cap light, while displayed by a multi-layered tier design that adds architectural distinction, and works with any style home. Four LED spots in the corners of the light highlight outdoor living spaces by showering the posts and area below with accent lighting.

A POPULAR CHOICE...

Available in a variety of colors and sizes to fit your specific design needs.

The Nova Deck Light... fits posts in sizes ranging from 3 1/2" to 6 1/2"!



THE ORION



GEOMETRIC DESIGN ELEMENT... *The Orion Light*

Is the first of Aurora's Deck Lights that uses a geometric shape in front of the glass creating a new element of design. This new concept makes the Orion Light a beautiful accessory that adds another level of distinction, regardless of the time of day.

A SOLID DECISION...
Made of solid cast aluminum.
See chart for size and color.

Legend:
S = Standard Stock Light
* = Requires Conversion Base



LINE VOLTAGE LIGHTS:
Require a connection to 110 volt source
which makes these lights the brightest of all.

SIZE IN INCHES	Black	White	Natural Brown	Bronze	Tan	Clay
4"	*	*	*		*	*
4-3/8"						
4-5/8"						
5"	*	*				
5-1/2"	*	*	*	*		
6"						
6-1/2"						



LOW VOLTAGE LIGHTS:
Offer widest range of lighting
styles and colors.

SIZE IN INCHES	Black	White	Natural Brown	Bronze	Tan	Clay
3"	*	*		*		
3-1/2"	S	S	S	S	*	
4"	S	S	S	*	S	S
4-3/8"	*	*	*	*	*	*
4-5/8"	*	*	*	*		
5"	S	S	*	*	*	*
5-1/2"	S	S	S	S		
6"	*	*				
6-1/2"		*				



THE TITAN

CLASSIC LANTERN STYLE... *The Titan Light*

Has the classic appeal of a lantern light with updated style. It comes standard with heavy ribbed glass panels. Crystallized glass can be purchased separately for another distinctive look.



LOW VOLTAGE LIGHTS:
Offer widest range of lighting styles and colors.

SIZE IN INCHES	Black	White	Natural Brown	Bronze	Tan	Clay	Copper	Titanium
2"	S			S				
2-1/2"	S			S				
3"	*	*		*				
3-1/2"	S	S	S	S	*		S	S
4"	S	S	S	S	S	S	S	S
4-3/8"	S	S	S	S	*	*	S	S
4-5/8"	S	S	*	S			*	
5"	S	S	*	*	S	*	*	
5-1/2"	S	S	S	S				
6"	*	S						
6-1/2"		*						

LINE VOLTAGE LIGHTS:
Require a connection to 110 volt source which makes these lights the brightest of all.

SIZE IN INCHES	Black	White	Natural Brown	Bronze	Tan	Clay	Copper	Titanium
4"	*	S	*	*	S	*	*	*
4-3/8"	*	*	*	*			*	*
4-5/8"	*	*		*				
5"	*	S			*	*		
5-1/2"	S	S	*	S				
6"		*						
6-1/2"								

AN ARRAY OF OPTIONS...

The Titan is available in both line voltage and low voltage styles. See the chart for colors, sizes, and lighting source options.

Legend:
S = Standard Stock Light
* = Requires Conversion Base



THE SIRIUS



A MYRIAD OF COLORS...

The Sirius Deck Light comes in seven powder coated colors that coordinate beautifully with wood, composite decking, or vinyl deck and fence materials.



LOW VOLTAGE LIGHTS: Offer widest range of lighting styles and colors.

SIZE IN INCHES	Black	White	Natural Brown	Bronze	Tan	Clay	Copper
3"	*	*		*			
3-1/2"	S	S	S	S	*		S
4"	S	S	S	*	S	S	*
4-3/8"	*	*	*	*	*	*	*
4-5/8"	*	*	*	*			*
5"	*	S	*	*	S	*	*
5-1/2"	S	S	S				S
6"	*	*					
6-1/2"		*					

TRADITIONAL PYRAMID DESIGN... *The Sirius Light*

Available in both low voltage and line voltage, the Sirius light has a traditional appeal with its pyramid-shaped design of solid aluminum. The crystallized glass of the Sirius is a standard feature that creates a flicker-like swath of light. Ribbed glass can be purchased separately for a different lighting look.

SIZE IN INCHES	Black	White	Natural Brown	Bronze	Tan	Clay
4"	*	S	*		*	*
4-3/8"		*			*	
4-5/8"		*		*		
5"		S			*	
5-1/2"	S	S	*			
6"		*				
6-1/2"		*				

Legend:

S = Standard Stock Light
* = Requires Conversion Base

LINE VOLTAGE LIGHTS:

Require a connection to 110 volt source which makes these lights the brightest of all.



THE ZENITH

SIZE IN INCHES	Black	White
3"	*	*
3-1/2"	S	S
4"	*	S
4-3/8"	*	*
4-5/8"	*	*
5"	*	S

LOW VOLTAGE LIGHTS:
Offer widest range of lighting styles and colors.

ILLUMINATED MODERN APPEAL... *The Zenith Light*

Available in both low voltage and line voltage, the Zenith light has a modern appeal featuring an illuminated crystal ball on top the multi-layered design.



SIZE & COLOR SOURCES...
See chart for sizes, colors and lighting sources.

SIZE IN INCHES	Black	White
4"	*	S
4-3/8"	*	*
4-5/8"	*	*
5"	*	*

LINE VOLTAGE LIGHTS:
Require a connection to 110 volt source which makes these lights the brightest of all.

COMES STANDARD
With ribbed glass; crystallized glass can be purchased separately.

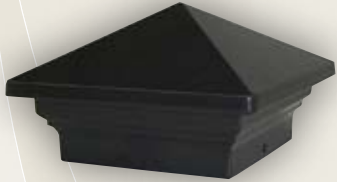
Legend: S = Standard Stock Light * = Requires Conversion Base



THE POST CAPS

MANY OF *Aurora's Deck Lights*... Are available in matching post caps for coordinated style where lights are not needed. Post Caps come in a variety of styles, colors and sizes. See the charts for specifics, or contact Aurora for more information.

THE SIRIUS MATCHING CAPS



SIZE IN INCHES	Black	White	Natural Brown	Bronze	Tan	Clay	Copper
3"	*	*		*			
3-1/2"	S	S	S	S	*		S
4"	S	S	*		S	S	
4-3/8"	*	*	*	*	*	*	*
4-5/8"	*	*	*	*			
5"	*	S	*	*	*	*	*
5-1/2"	S	S	S	S			S
6"	*	*					
6-1/2"		*					



THE TITAN MATCHING CAPS



SIZE IN INCHES	Black	White	Natural Brown	Bronze	Tan	Clay	Copper	Titanium
3"	*	*		*				
3-1/2"	S	S	S	S	*		S	*
4"	S	S	*	S	S	S	*	S
4-3/8"	S	S	*	S	*	*	*	*
4-5/8"	*	*	*	*				
5"	S	S	*	*	*	*	*	*
5-1/2"	S	S	S	S			S	
6"	*	*						
6-1/2"		*						



THE ZENITH MATCHING CAPS



SIZE IN INCHES	Black	White
3"	*	*
3-1/2"	S	S
4"	S	S
4-3/8"	*	*
4-5/8"	*	*
5"	*	*



YELLOW STAR SOLAR SYSTEM

THE *Solar Powered Lighting System*...

Is perfect for Green Building Solutions, piers, boat houses, horse barns or remote structures!

AN AFFORDABLE SOLAR POWERED LIGHTING SOLUTION...

For decks, railing, barns, out buildings, and other remote structures, all powered by the sun!

THIS *Green Building Solution*...

Allows for a variety of light source options from Aurora, including LED strip lights, tiny recessed LED lighting, and Aurora's Decklights incorporating the LED bulbs.

THE "STAR" OF THE SYSTEM...

Is the multi-crystalline solar panel that is small enough to be easily mounted to any structure's exterior, or be mounted to a 2-1/2" steel post, with southern exposure. The panel measures 24" x 30" and will provide reliable solar power for hours of continuous lighting. A timer allows for automated operation.



OTHER *Aurora Light Options*...

Can also be operated with the Yellow Star Panel System, making it one of the most exciting new products on the market for adding a range of lighting!

The system comes complete with the Yellow Star Solar Panel, control panel and battery housing, 12Ahr sealed cell battery, and mounting hardware.



LIGHTING ACCESSORIES

Aurora Deck Lighting offers an array of accessory lights and hardware to enhance the deck's appearance. Aurora offers hardware, transformers, and pigtails for a wide variety of deck lighting layouts and designs.



Horizontal Rail Adapter



Warm White & Cool White LED Bulbs



12 Ga. Low Voltage Wire



Transformers



Pigtails



12 Ga. LV Spools

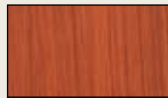
COLOR OPTIONS



BLACK



WHITE



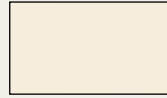
NATURAL BROWN



BRONZE



CLAY



TAN



TITANIUM



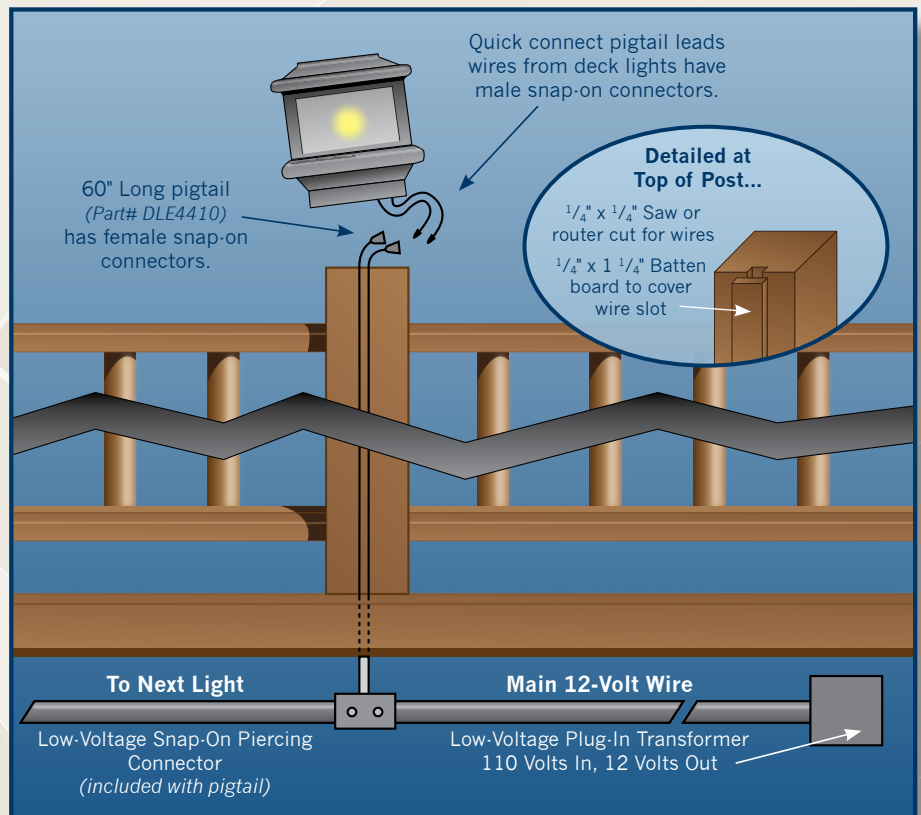
COPPER

WIRING INSTRUCTIONS

AURORA DECK LIGHTING OFFERS A PROPRIETARY PIGTAIL CONNECTOR, WHICH CONNECTS THE LIGHT FIXTURE TO THE MAIN LOW VOLTAGE LINE!

This simple to use connector is self piercing and requires no cutting or splicing. Provides a long lasting and weatherproof connection. Available in 12", 60" and 96" depending on post length. Order one per light.

Unscrew the pigtail housing, press in place the 12 volt main line across the two metal piercing connectors, so that the metal piercing connectors make a good contact with the wire. Run the pigtail wire up the post, and connect (snap) the deck light leads to the pigtail leads. This pigtail can be buried, installed in the railing, or in the joist structure. Place the deck light onto the post and screw the deck light to the post using the two screws provided.



Aurora Deck Lighting makes installing as easy as possible to save you time!

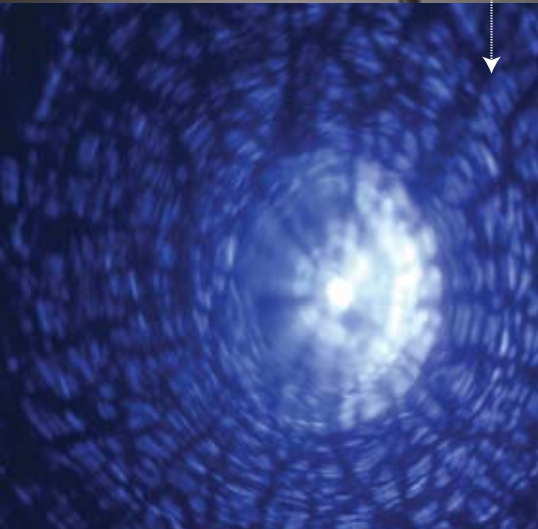
THE LUNAR

The Lunar Series Of Lights... Illuminate landscaping beds and walkways through solar power! These decorative lights turn on and off automatically and are made of cast powder coated aluminum.

THE THREE STYLES... Gemini, Apollo and Mercury:

Come with a real crystal glass lens for unparalleled light refraction, as shown below, bottom.

THE GEMINI



THE APOLLO



THE MERCURY



**PHOTO
GALLERY**



**PHOTO
GALLERY**



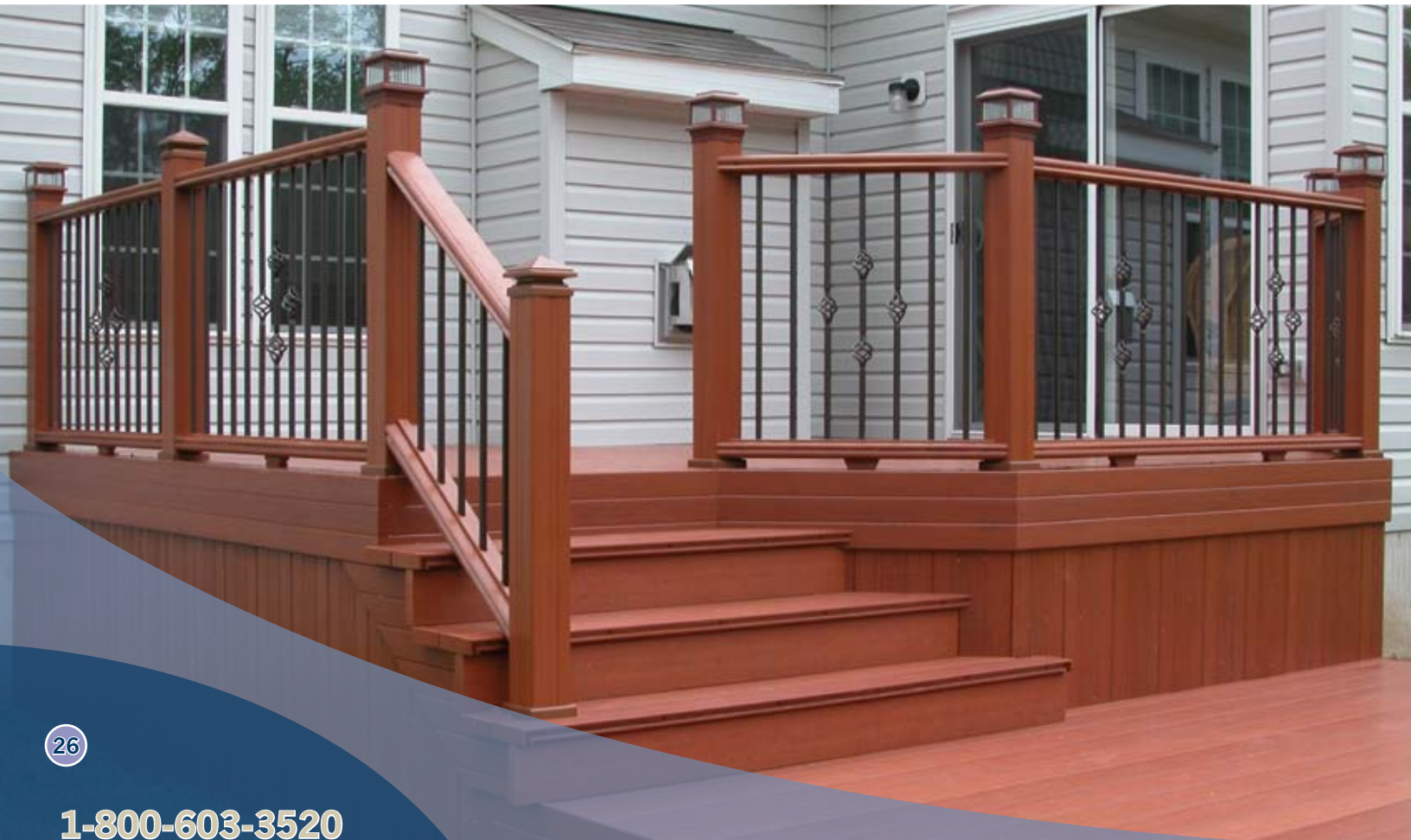
**PHOTO
GALLERY**



**PHOTO
GALLERY**



**PHOTO
GALLERY**



**PHOTO
GALLERY**





Aurora *
DECK LIGHTING

AURORA DECK LIGHTING, LLC
960 E. Milwaukee Street
Whitewater, WI 53190
1-800-603-3520
Fax 262-472-6268
www.auroradecklighting.com