

SCREENEZE® AND PLINTH INSTALLATION INSTRUCTIONS

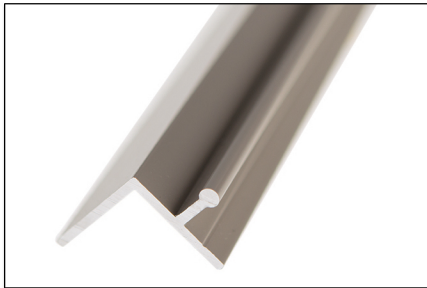
READ INSTRUCTIONS ALL THE WAY THROUGH PRIOR TO INSTALLING

SAFETY NOTICE

SCREENEZE® fixed screen porch system is produced and sold for a specific use; "field built screen system". Install SCREENEZE® per the instructions provided. Do not use SCREENEZE® for any purpose other than securing screen material to a screen enclosed structure. DO NOT USE SCREENEZE® FOR FALL PROTECTION. As with the installation of any building product, we strongly recommend the use of hand, eye and ear protection. Refer to your State or Federal OSHA guidelines for the proper use of tools and accessories needed for the installation of this product. Home Improvement Systems Inc. shall not be responsible for injury or damage resulting from the use of SCREENEZE®.

STEP 1

Identify the parts of SCREENEZE® (*Plinth is optional*)



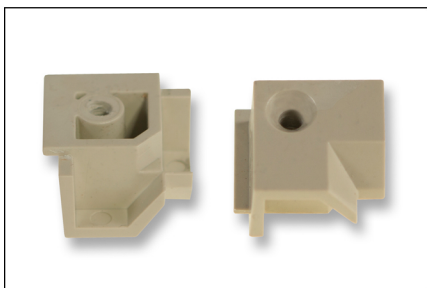
Aluminum Base Channel
(3/4" X 3/4", 8' or 12' in length)



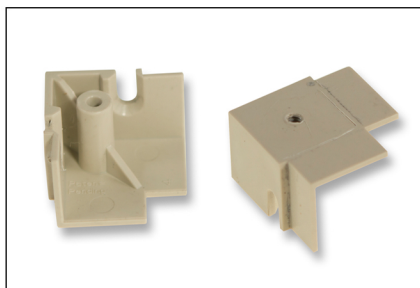
Vinyl Cap
(3/8" X 1/2", 8' or 12' in length)



Included Screws
(1 1/4" in length)



Plinth



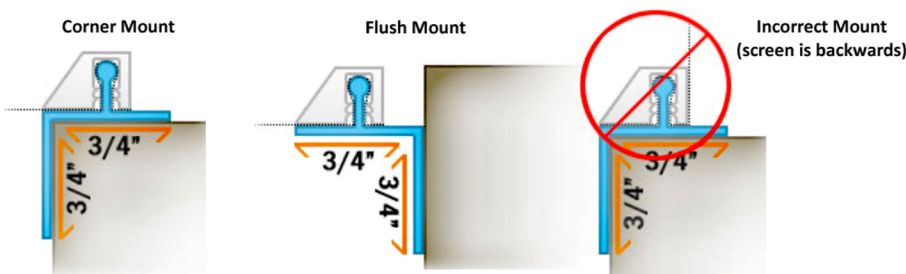
Plinth Flush Base



Plinth Screws

STEP 2

Determine if you are going to do a flush mount or corner mount.



TOOLS FOR INSTALLATION

- Rubber Mallet
- Small Pry Bar or 5 in 1 Tool
- Utility Knife
- Standard Drill
- Tape Measure
- 10" Miter Saw (see step 7)

STEP 3

Decide if you are going to utilize the *optional* Plinth Kits (sold separately) to eliminate mitering the SCREENEZE® corners. If you are going to use the *optional* Plinth Kits, proceed to **Step 4** for a Flush Mount Application or **Step 5** for a Corner Mount application.

NOTE: If you are doing a Flush Mount, you will utilize the Plinth Flush Kits. If you are doing a Corner Mount, you will utilize the Plinth Corner Kits. You will need one Plinth Kit per opening.

If you are NOT going to use the *optional* Plinth Kits for installation, continue with the Traditional SCREENEZE® Installation Instructions starting on **Step 6** on **Page 3**.

PLINTH KITS SCREENEZE® INSTALLATION INSTRUCTIONS (optional)

PLINTH FLUSH MOUNT APPLICATION

STEP 4

NOTE: If you are doing a Flush Mount, you will utilize the Plinth Flush Kits (sold separately). Review **Steps 6 & 7** first.

STEP 4.1

Measure each side of your opening corner to corner.

STEP 4.2

Square cut **SCREENEZE®** Aluminum Base and Vinyl Cap together 1 5/8" overall shorter than the actual opening.



STEP 4.3

Screw in the Plinth Base with the face side at the desired location for all four corners.



STEP 4.4

Slide the aluminum base behind the Plinth base tabs.



STEP 4.5

Follow Traditional **SCREENEZE®** Installation Instructions starting at **Step 8** and ending on **Step 13**, then return to **Step 4.6** to finish the Plinth Mount application.

STEP 4.6

After you install **SCREENEZE®** and trim the screen fabric, then install the Plinth with the included screws.



PLINTH CORNER MOUNT APPLICATION

STEP 5

NOTE: If you are doing a Corner Mount, you will utilize the Plinth Corner Kits (sold separately). Review **Steps 6 & 7** first.

STEP 5.1

Measure each side of your opening corner to corner.

STEP 5.2

Square cut **SCREENEZE®** Aluminum Base and Vinyl Cap together 1/8" overall shorter than the actual opening.



STEP 5.3

Follow the Traditional **SCREENEZE®** Installation Instructions starting at **Step 8** and ending on **Step 13**, then return to **Step 5.4** below to finish the Plinth Corner Mount application.

STEP 5.4

After you install **SCREENEZE®** and trim the screen fabric, then install the Plinth with the included screws.



TRADITIONAL SCREENEZE® INSTALLATION INSTRUCTIONS USING MITER CUTS

STEP 6

After determining the application, snap or slide the Vinyl Cap onto the Aluminum Base Channel. You will cut both pieces as one.

TIP: The beveled edge of the Vinyl Cap will ALWAYS face toward the screen opening. Make sure the Vinyl Cap is facing the correct way according to your choice in application prior to cutting (flush or corner).

TIP: Pencil identifying marks on the corresponding Vinyl Cap and its Aluminum Base Channel so they are easily placed and kept together when completing **Steps 7 through 10**.

STEP 7

Measure the opening and cut as required. Be sure Vinyl Cap does not move on the Aluminum Base Channel while making miter cuts.

CUTTING TIP: Use a 10" miter saw with a 200 tooth blade for cutting plywood. We also recommend the Freud Diablo series blade for cutting non-ferrous/plastic material; specifically, the 10" 80 tooth blade. You can also use a hack saw with a metal cutting blade.

TIP: Never force **SCREENEZE®** into an opening. For best results, make cuts snug or short by 1/32" - 1/16" to allow for expansion and contraction.

STEP 8

Find the center of each piece. Then mark for screw location at 10" - 12" O.C. from and including the center mark. Always screw at 2" from either end of cut piece. Adjust your centers to the 2" distance from the end of the cut piece.

TIP: Although we provide a self-tapping screw, we recommend pre-drilling a 3/16" hole at your marked centers. We recommend a standard drill. Impact drills have too much torque.

STEP 9

Place cut pieces in opening and check for fit. Look for true corners (look for proper fit if using Plinths). Adjust if required. Secure the Aluminum Base Channel to the porch framing with **SCREENEZE®** supplied screws (T-25 for Sand or #2 Square Drive for Bronze, White, Clay self-tapping #11 x 1 1/4 inch). *Screws are recommended for standard use in most material, but NOT recommended for salt air installation.

STEP 10

Remove the Vinyl Cap from the Aluminum Base Channel. A 5-in-1-tool, a miniature "Wonder Bar", or a small straight screw driver may be used. Be careful not to scar the Aluminum Base Channel or Vinyl Cap during this process. Be careful not to mix-up the pieces as they might be different lengths.

TIP: After loosening the ends, gently pull the Vinyl Cap off the Aluminum Base Channels.

STEP 11

To install screen; hold fabric to the top (always first) of the opening. Square the fabric on top of the opening, then attach screen to Aluminum Base Channel by pressing or tapping the Vinyl Cap onto the corners by seating the Vinyl Cap to the Aluminum Base Channel with a rubber hammer. Next, proceed to the center of the cap to seat it completely. Make sure the screen has remained square on the frame. Complete the Vinyl Cap installation by tapping from the center out towards the corners. Be sure the Vinyl Cap is secure against the Aluminum Base Channel before proceeding.

TIP: If it's a windy day, place a thumbtack on each corner and leave the screen on the roll to help keep it square and not blow around.

STEP 12

Install the Vinyl Cap on the bottom (always second) of the opening in the same manner used in **Step 11**.

TIP: DO NOT STRETCH the screen fabric. **SCREENEZE®** will uniformly stretch the screen fabric for you. Let the screen drape over the bottom channel and position the screen so there are no wrinkles left or right.

STEP 13

Install the side pieces as described in **Step 11**. Check the entire installation to ensure that the Vinyl Cap is completely seated on the Aluminum Base Channel. Use a razor knife to cut away excess screen fabric. Return to **Step 4.6** or **Step 5.3** if using Plinths.

TIP: Use the base of the Vinyl Cap, holding your knife at a perpendicular angle as a guide for trimming the screen.

COLD TEMPERATURE INSTALLATION INSTRUCTIONS

When installing in temperatures below 60°, make sure that the Vinyl Caps are warmed or stored in a heated area. We recommend using portable heat prior to installation. Remember, it is PLASTIC. Cool temperatures can make the vinyl brittle causing it to split or crack during installation. This will occur at the ends so be sure to hand press the caps at the corners and take the previous stated precautions. Also, tap the cap close to a previously expanded point.

If you do experience the Vinyl Cap cracking, please call 800.884.6697.

SCREENEZE® LIMITED PRODUCT WARRANTY

TERMS: 10 years from date of purchase

COVERAGE: We warrant that SCREENEZE® will perform as a fixed screen installation system. The SCREENEZE® components, Aluminum Base and Vinyl Cap only, will perform as intended for stretching and securing screen fabric in a vertical position on the walls of a traditional screen room.

CONDITIONS: Home Improvements Systems, Inc., manufacturers of SCREENEZE®, will consider claims for manufacturing defects in the Aluminum Base and/or Vinyl Cap only. Home Improvement Systems, Inc. will replace products with manufacturing defects at the company's discretion.

EXCLUSIONS FROM COVERAGE:

- Labor to remove or install replacement material
- Screws*
- Screen Fabric
- Defects due to ordinary wear and tear or abuse are excluded from coverage
- Defects caused by improper installation and/or misapplication of the product are excluded from coverage i.e. SCREENEZE® installed as an awning or roof system regardless of the screen material attached
- Defects due to damage to vinyl caps when installed in temperatures below 60°
(*care should be taken to store material in a heated area prior to installation if temperatures are below 60°*)
- Defects in the performance of the product due to failure or deterioration of the primary structure that SCREENEZE® is attached to

CLAIMS PROCEDURE: Send claims to Home Improvement Systems, Inc., 2530 Spring Grove Ave., Suite 1A, Cincinnati, OH 45214. Include proof of purchase, photograph of defect, contact information, and a sample of the defective product. No claim can be processed without prior company approval.

EFFECTIVE DATE: February 24, 2017

Screws are recommended for standard use in most material, but not recommended for salt air installation

SCREENEZE® is a patented fixed screen system made in the USA - U.S. Patent No. 6,378,267
Plinth is a patented product made in the USA - US Patent No. 9518423 - US Design Patent No. D756,536



SCAN FOR

FRENCH OR SPANISH